

CUBA AT A GLANCE

The recent “normalizing” of relations with the U.S. has provided a historic opportunity to support the work of the Church in Cuba. For more than 50 years, Cuba was officially closed to U.S. travelers. The change in relations has now allowed us to be a part of what God is doing there!

In keeping with its primary mission, Forward Edge is sending teams to Cuba that focus primarily on supporting church-run programs. Additional ministry opportunities include relational evangelism such as home visits, helping with feeding programs for children and other ministry activities. Teams may be able to hold a workshop or bible study with adults and activities for youth and/or children. Teams may also help to complete light work projects.

We are humbled by the faithful devotion to Jesus Christ found among our Cuban brothers and sisters despite the hardships they face. Our hope is that each team member is encouraged and inspired by the work God is doing as they serve alongside these fellow believers. We hope you will consider joining us as we serve in Cuba!

CUBA TRIP INFORMATION

The following provides some helpful information for team members choosing to serve with Forward Edge in Cuba. Please contact us with any questions.

PAYMENTS

A \$200 non-refundable deposit is due at the time of registration and will be applied towards your trip fee. Payments can be paid by check, by an ACH payment (please contact us), or online by creating an account at www.forwardedge.org. Make checks payable to: Forward Edge International. All payments need to reflect the team member name and team number.



TRIP FEE INFORMATION

\$862 Trip Fee &
\$133 Visa Fee
Total Trip Fee: \$995

IMPORTANT DATES

100 DAYS BEFORE DEPARTURE
\$350 Non-Refundable
Deposit Due, Registration,
Cuba Flights* &
Medical Release Forms DUE

30 DAYS BEFORE DEPARTURE
\$645 Payment Due

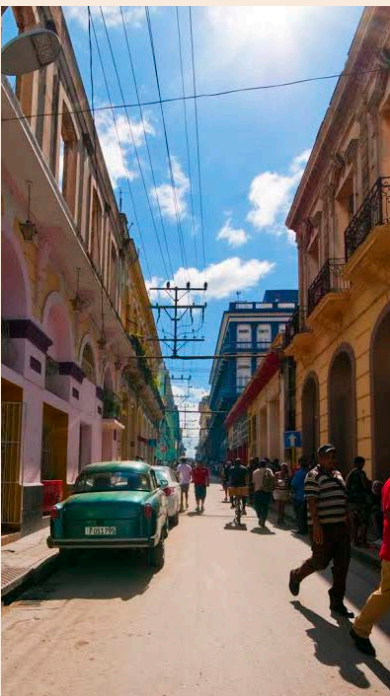
*See Flights section

TRIP FEES INCLUDE

- Meals, cooking, lodging, translators, team packs, ground transportation, visa fee, and international medical coverage
- Religious visa fee (\$133 USD)
- On-site facilitator
- Complete trip coordination provided by Forward Edge

TRIP FEES DO NOT INCLUDE

- Airfare and luggage fees
- \$30 entrance fee. (This fee might be included in your airfare, please consult the travel agent.)
- Possible hotel stay in Miami the night before the team enters into Cuba (depends on flights)



FOR MORE INFO

Noah Hoff

Team Coordinator

noahhoff@forwardedge.org

360.574.3343

TEAM MEMBER PREPARATIONS

IMMUNIZATIONS: The government of Cuba does not require any shots or immunizations to enter the country. Please consult a personal physician for any recommendations.

TEAM PACKS: Once registration is complete, Forward Edge will send the team packs. Each will include a t-shirt, a Cuba Team Member Manual, a devotional, and other Forward Edge items.

SCHEDULE: Each day your team will experience a morning devotional, an evening debrief, and relationship building opportunities through serving the local people.

PASSPORTS

A passport is required to enter Cuba. No other identification is needed. If you already have a passport, please be sure that the expiration date is at least six months past the date of your departure from Cuba. If you do not have a passport, please apply for one as soon as possible. Both the application and renewal processes can take up to 6-8 weeks.

RELIGIOUS VISAS

Team members will travel on Religious Visas. Please note that Forward Edge must apply for the religious visas no less than 90 days prior to departure. Please make sure your flights into Cuba are at least reserved and that your passport is current (it does not expire less than six months after your return date).

FLIGHTS

Teams can fly into Holguin, Cuba which is about two hours northwest of Santiago. The team Facilitator will meet the team in the USA before flying into Cuba. The team will then be picked up by a member of our field staff.

A few commercial airlines fly regularly into Holguin. Airfare ranges from \$400-900 per round-trip ticket, this depends upon the airline and where you are flying from. Our preferred travel agent can help you find the best rates. Please talk with our Cuba Team Coordinator who can assist you with reserving flights through the help of our preferred travel agent.

TEAM MEMBER CONDUCT

While team conduct is of the utmost importance for any short-term mission trip, it's especially vital to our partnerships in Cuba that team members never use or mention the word, "donation"; only use the word "gift" or phrase "as a gift". Also, please refrain from discussing any politics.